

# Creating Shadows in Photoshop CC (one method)

**Step 1** - Find your images you wish to combine. Choose one as the palette, the other as your composite. ( Make sure your image you are going to composite is smaller than your palette image)



The flowers are my palette and my wife will be composited into them, with a shadow, which is not there



**Step 2** Select the portion of the image you wish to composite in the first image. After making the selection, refine edges so the transition will be smooth. Command C – or copy the selected portion of the image.



**Step 3** – move to your palette image – create a new layer – Command V and place the copied image from your compositor to your palette. Position and size the image appropriately to taste using the **TRANSFORM COMMANDS**.

**Step 4** – make the layer you just placed as the composited image a **SMART OBJECT**. (Right click on the layer, select **CONVERT TO SMART OBJECT**,

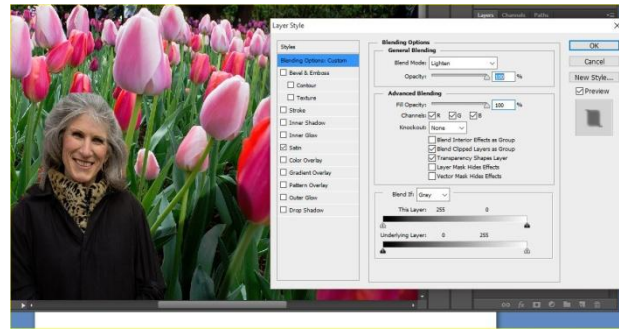


**Step 5** – Click on the icon in that selected layer that will open the smart object. Use scale and perspective and any other adjustments to that layer to continue to make changes so the transition looks seamless.

**Step 6** – Return to your original compositor image and copy it again. Now return to the palette, paste it into the image which will make another layer. This time **DO NOT** make it a smart object but go to **TRANSFORM MENU** and distort it using all the tools. You will place this image as you want the shadow to fall inside the palette.



**Step 7** – On the layer you just created, now right click on the layer and go to **BLENDING MODES**. Select **SATIN** in the styles column. In **BLEND MODE** select **LIGHTEN** - and in **ADVANCED BLENDING YOU ARE SELECTED ON THE GRAY CHANNEL**. With the sliders at the bottom of the dialogue box, use the **THIS LAYER** slider to eliminate the continual tone of the distorted image and it will give you a shadow like effect. It will be somewhat transparent, which is what shadows usually are.



**Step 8** – Now finish the shadows making tonal adjustments with opacity. You can make the shadow darker if you like by returning to the background layer, selected your **BURNING tool** from the toolbox column and lighting darkening the shadow area.

**Step 9** - As long as you keep this layer, it will be adjustable. Since you have the original image as a SMART OBJECT, if you need to adjust either the composited image, or the shadow, you can do it easily.

